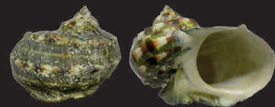


Smooth Top Shell

Tectus niloticus [Syn: *Trochus niloticus*]; Samong, Tuwad
FAO 208



Green Snail

Turbo marmoratus; Laong, Bulatok
FAO 208



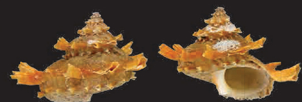
Angel Wing Shell

Barnea manilensis; Diwal
FAO 208



Smudged Moon Scallop

Dentamussium obliteratum [Syn: *Amusium obliteratum*]
FAO 208



Girgyllus Star Shell

Bolma girgyllus
FAO 208



Bent Cerith

Clypeomorus adunca
FAO 208



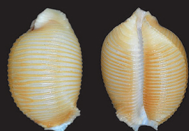
True Separatista

Separatista blainvilliana
FAO 208



Martini's Tibia

Rostellariella martinii [Syn: *Tibia martinii*]
FAO 208



Children's Cowrie

Ipsa childreni [Syn: *Cypraea childreni*]
FAO 208



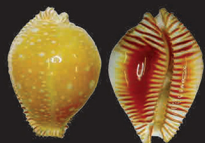
Beck's Cowrie

Erosaria beckii [Syn: *Cypraea beckii*]
FAO 208



Porter's Cowrie

Lyncina porteri [Syn: *Cypraea porteri*]
FAO 208



Great Spotted Cowrie

Perisserosa guttata [Syn: *Cypraea guttata*]
FAO 208



Teramachi's Cowrie

Nesiocypraea teramachii [Syn: *Cypraea teramachii*]
FAO 208



Martini's Cowrie

Notadusta martini [Syn: *Cypraea martini*]
FAO 208



Katsue's Cowrie

Palmulacypraea katsuae [Syn: *Cypraea katsuae*]
FAO 208



Saul's Cowrie

Palmadusta saulae [Syn: *Cypraea saulae*]
FAO 208



Golden Cowrie

Lyncina aurantium [Syn: *Cypraea aurantium*]
FAO 208



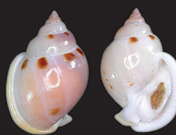
White-toothed Cowrie

Lyncina leucodon [Syn: *Cypraea leucodon*]
FAO 208



Prince Cowrie

Leporicypraea valentia [Syn: *Cypraea valentia*]
FAO 208



Smooth Bonnet

Semicassis glabrata [Syn: *Phalium glabratum glabratum*]
FAO 208



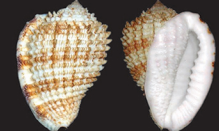
Wyville's Bonnet

Echinophoria wyvillei [Syn: *Phalium coronadoi wyvillei*]
FAO 208



Kurz's Morum

Morum kurzii
FAO 208



Giant Morum

Morum grande
FAO 208



Watson's Morum

Morum watsoni
FAO 208



Network Beak Shell

Varicospira crispata
FAO 208



Deep Sea Cap

Malluvium lissum
FAO 208



Recluzia Snail

Recluzia lutea
FAO 208



Club-shaped Boring Clam

Eufistulana mumia
FAO 208



True Giant Clam

Tridacna gigas; Taklobo
FAO 208, Section 97 RA 8550, CITES Appendix II



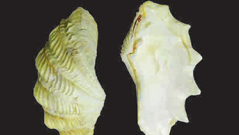
Smooth Giant Clam

Tridacna derasa; Taklobo
FAO 208, Section 97 RA 8550, CITES Appendix II



Fluted/Scaly Giant Clam

Tridacna squamosa; Taklobo, Hagdan-hagdan
FAO 208, Section 97 RA 8550, CITES Appendix II



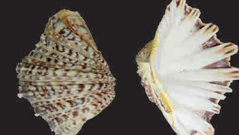
Elongated Giant Clam

Tridacna maxima; Taklobo, Manlet, Manlot
FAO 208, Section 97 RA 8550, CITES Appendix II



Boring Clam

Tridacna crocea; Taklobo, Letlet
FAO 208, Section 97 RA 8550, CITES Appendix II



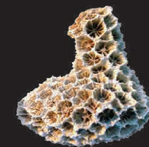
Horse Hoof Clam

Hippopus hippopus; Taklobo, Kukong-kabayo
FAO 208, Section 97 RA 8550, CITES Appendix II



Porcelain Clam

Hippopus porcellanus; Taklobo, Kukong-kabayo
FAO 208, Section 97 RA 8550, CITES Appendix II



Hard/Stony Corals

Scleractinia spp.
FAO 202, Section 97 RA 8550, CITES Appendix II



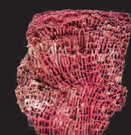
Fire Corals

Milleporidae spp.
FAO 202, Section 97 RA 8550, CITES Appendix II



Lace Corals

Stylasteridae spp.
FAO 202, Section 97 RA 8550, CITES Appendix II



Organ Pipe Corals

Tubiporidae spp.
FAO 202, Section 97 RA 8550, CITES Appendix II



Black Corals

Antipatharia spp.
FAO 202, Section 97 RA 8550, CITES Appendix II



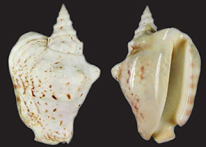
Blue Corals

Helioporidae spp.
FAO 202, Section 97 RA 8550, CITES Appendix II



Red/Precious Corals

Paracorallium japonicum [Syn: *Corallium japonicum*],
C. konjoi [Syn: *C. konjoi*], *C. elatius*, and *C. secundum*
FAO 202, Section 97 RA 8550, CITES Appendix III



Thersite Stromb

Thersitrombus thersites [Syn: *Strombus thersites*]
FAO 208



Marie's Cowrie

Antipona mariae [Syn: *Cypraea mariae*]
FAO 208



Bullmouth Helmet

Cypraea rufa
FAO 208



Dance's Volva

Phenacovolva dancei
FAO 208



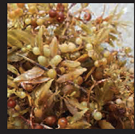
Helmet Shells

Genus *Cassia*; *Cassia cornuta*; Budyong
FAO 158



Trumpet Shells

Genus *Triton* or *Charonia*; *Charonia tritonis*; Tambuli
FAO 158



Sargassum (Brown Algae)

Sargassum spp.; Kulapo, Samo
FAO 250, s. 2014



Spoon Seagrass
Halophila ovalis



Sickle Seagrass
Thalassia hemprichii

All Seagrasses

Cymodocea rotundata, *C. serrulata*, *Halodule pinifolia*,
H. uninervis, *Syringodium isoetifolium*, *Thalassodendron*
ciliatum, *Enhalus acoroides*, *Halophila beccarii*, *H. minor*,
H. ovalis, *H. spinulosa*, *Thalassia hemprichii*; Lusak
FAO 250, s. 2014

Convention on International Trade in Endangered Species of Wild Fauna and Flora (CITES) Appendix

Species listed in Appendix I are threatened with extinction and are or may be affected by trade. Commercial trade in Appendix I species is strictly prohibited. Appendix II includes species that are not necessarily threatened with extinction but may become threatened if their trade is not carefully regulated. They may be traded commercially under certain conditions and with special permits. Appendix III includes species legally protected within the borders of a member nation that have been determined to need international trade control. Some trade in Appendix III species is allowed with special permits.

However, Philippine Laws provide full protection to all CITES-listed aquatic species and their trade is strictly prohibited. For more info, visit www.cites.org, www.bfar.gov.ph, and www.denr.gov.ph.

REGULATED PHILIPPINE AQUATIC WILDLIFE



Mud Crab

Scylla serrata; Alimango
FAO 162

It shall be unlawful for any person to export or cause to be exported live mud crabs measuring less than 10 centimeters (carapace length) and weighing less than 200 grams.



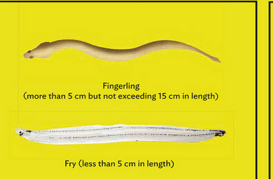
Milkfish

Chanos chanos; Bangus
Sec. 61 and 98 of RA 8550; FAO 173, s. 1991

Spawners, breeders, eggs, and fry of bangus shall not be exported or caused to be exported by any person (from Sec. 61, RA 8550).

It shall be unlawful for any person to catch, gather, capture, or possess mature milkfish or sabalo (from Sec. 98, RA 8550).

It shall be unlawful for any person to export or cause to be exported bangus fingerlings or hatirin (from FAO 173, s. 1991).

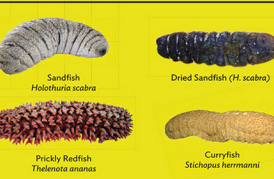


Eel

Family *Anguillidae*; Igot
FAO 242, s. 2012, Sec. 61, b and 107 of RA 8550

Family *Anguillidae* includes *Anguilla luzonensis*,
A. celebensis, *A. melanocephala*, *A. marmorata*, *A. japonica*,
A. bicolor, *A. bengalensis bengalensis*, *A. australis*
australis

It shall be unlawful for any person, association, or corporation to export or cause to be exported fry and fingerlings (elvers) of eel species.



Sea Cucumber

Class *Holothuridae*; Balaan, he-ut, but (includes harginan, susan, bakungan, putian and other commercial sea cucumber species);
Section 2 of BFAF Administrative Circular 248

It shall be unlawful to gather, collect, catch, take, or cause to be taken sea cucumber species for commercial trade without an Aquatic Wildlife Collector's Permit or to transport without a Local Transport Permit. Both permits are issued by the BFAF Provincial Fisheries Office.

It shall be unlawful for any person, association, or corporation to possess, transport, sell, trade, or export sea cucumber species in any state or form except in dried form with minimum size of 2 inches or 5 centimeters in length.

Photos: Smooth Top Shell, Girgillus Star Shell, Bullmouth Helmet, and Helmet Shells CC BY SA 3.0 H. Zell, Angel Wing Shell © International Fossil Shell Museum (fossilshells.nl), Bent Cerith © Smithsonian Institution/National Museum of Natural History (collections.mnh.si.edu), True Separatista © Worldwide Mollusc Species Database (bagniliggia.it), Beck's, Porter's, and Marie's Cowrie CC BY NC SA 3.0 Natural History Museum Rotterdam, Katsue's, Teramachi's, Martini's, Saul's, and White-toothed Cowries © Philipp Rosenkranz (cypraea.eu), Smudged Moon Scallop, and Smooth and Wyville's Bonnet CC BY NC 3.0 Femorale (femorale.com), Giant Morum and Watson's Morum CC BY NC 3.0 Bill Frank (jaxshells.org), Network Beak Shell © Virgilio Liverani (stromboidea.de), Deep Sea Cap CC BY SA 3.0 Olivier Caro, Thersite Stromb, Recluzia Snail, Dance's Volva, and Kurz's Morum © Guido and Philippe Poppe (conchology.be), Club-shaped Boring Clam CC BY SA 3.0 Biologiezentrum der Oberösterreichischen Landesmuseen, Fire Coral CC BY SA 3.0 Nick Hobgood, Lace Corals CC BY SA 3.0 J. J. Messerly/Bishop Museum Hawaii, Organ Pipe CC BY SA 3.0 JilElle/Corals Musée zoologique de Strasbourg, Black Corals, Green Snail, Great Spotted Cowrie, True Giant Clam, Elongated Giant Clam, Horse Hoof Clam, and Porcelain Clam CC BY NC SA 4.0 Dana Salony/National Museum of the Philippines, Blue Corals CC BY SA 3.0 Kinkreet/Natural Museum History London, Smooth Giant Clam, Boring Clam, Golden Cowrie, and Prince Cowrie CC BY NC SA 4.0 Angelo Lumba/Marine Science Institute, University of the Philippines Diliman and Benjamin Vallejo, Jr. Invertebrate Collection, Spoon Seagrass and Sickle Seagrass © Ria Tan (wildsingapore.com), Mud Crab © SEAFDEC/AQD, Mature milkfish CC BY NC 3.0 John Randall, Milkfish Fingerling CC BY SA 2.5 OpenCage, Milkfish fry CC BY NC ND 3.0 WorldFish Center, Elver CC BY SA 3.0 Dana Salony, Eel Fry © Jordan Colosi/Yale Peabody Museum of Natural History, Sandfish © S. Dulunaquio/Wildlife Conservation Society, Dried Sandfish © FAO, Prickly Redfish CC BY SA 3.0 Alexander Vasenin, and Curryfish CC BY SA 3.0 Francois Michonneau. All other photos not mentioned are public domain. Special thanks to Edwyn Alesna and Ludivina Labe, Regulatory and Quarantine Division, Bureau of Fisheries and Aquatic Resources (BFAR), and Mooneyen Alava, Raul Roldan, Dana Salony, and Angelo Lumba for their technical assistance.

DEPARTMENT OF AGRICULTURE
BUREAU OF FISHERIES AND AQUATIC RESOURCES
REGIONAL OFFICE 8

PROTECTED PHILIPPINE AQUATIC WILDLIFE

MAHIGPIT NA IPINAGBABAWAL ang manguha, manghuli, pumatay, magbenta, bumili, at mangalakal ng mga sumusunod na yamang tubig sapagkat nanganganib nang maubos ang mga ito!



CTI-SEA
Coastal and Marine Resources Management
in the Coral Triangle - Southeast Asia

